



THE WAY YOU MAKE A GOOD CUT  
WHEN PEEL GRIND

**Q-Ma**



ROLLOMATIC NP<sup>SERIES</sup>

**RIEGGER**

## **Higher efficiency**

Over 50 years of experience in the application-oriented development of tool systems have enabled us to develop grinding wheels according to customer specifications- with the highest stock removal rates and maximum tool life.

**The result:** Reduced processing times with increased operational performance

**In Short:** More efficiency

## **Lower costs**

The bond systems specifically developed for the requirements of peel grinding impress with their high grain retention force and dimensional stability.

**Your advantages:**

- Increase in productivity and profitability
- Reduction of unit costs
- Significantly reduced setup and downtimes

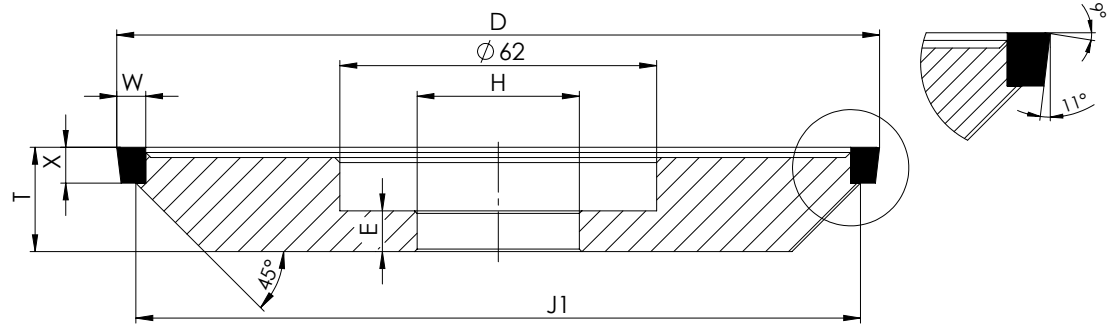
## **Higher quality**

Our systems especially developed for peel grinding, enable you to achieve reproducible results in terms of shape tolerances surface finishes and wear, even under the most demanding conditions. This allows you to produce truly brilliant grinding results.

# Q-max roughing



Art.No:26585



D	W	X	E	T	H
250	6	6	12	20	31.75

Shapes outside the stock range are possible on request

Recommended application parameters:

**Cutting speed**    **Vc = 85 - 90m/s**  
**Feed rate**        **Vf = 1-2mm/s**  
**Stock removal**    **ae = up to 4mm, depending on the feed rate.**

The specified parameters are guideline values.

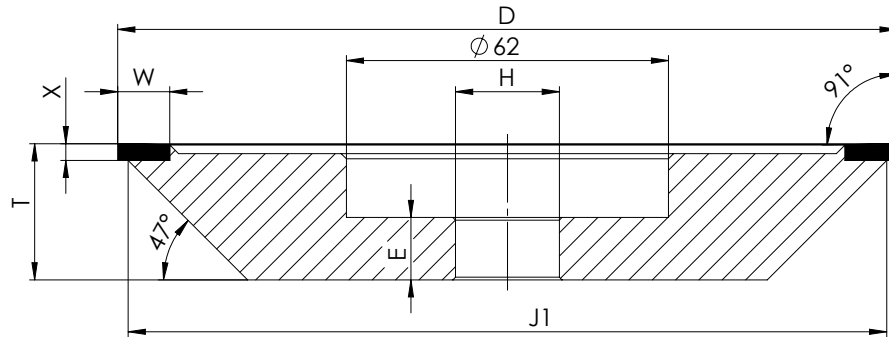
If necessary, the values have to be adjusted according to the machine conditions.

**RIEGGER**

# Q-max finishing



Art.No:26870



D	W	X	E	T	H
150	10	3	12	24	31.75

Shapes outside the stock range are possible on request

Recommended application parameters:

**Cutting speed**     **Vc = 55 - 60m/s**

**Feed rate**         **Vf = 1-2mm/s**

**Stock removal**     **ae = up to 0.2mm, depending on the preferred surface quality.**

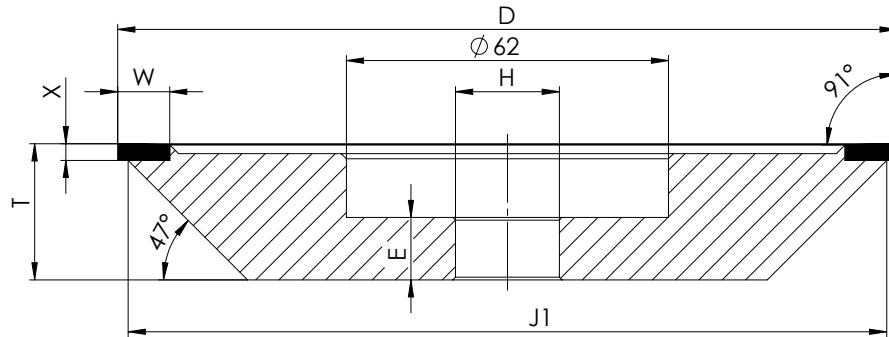
The specified parameters are guideline values.

If necessary, the values have to be adjusted according to the machine conditions.

# Q-max+ finishing



Art.No:38515



D	W	X	E	T	H
150	10	3	12	24	31.75

Shapes outside the stock range are possible on request

Recommended application parameters:

**Cutting speed**     **Vc = 55 - 60m/s**

**Feed rate**            **Vf = 1-2mm/s**

**Stock removal**     **ae = up to 0.2mm, depending on the preferred surface quality.**

The specified parameters are guideline values.

If necessary, the values have to be adjusted according to the machine conditions.

## Q-MaX roughing



Click here  
for a  
request

## Q-MaX finishing



Click here  
for a  
request

## Q-MaX+ finishing



Click here  
for a  
request

**RIEGGER Diamantwerkzeuge GmbH**

Daimlerstraße 7-971563 Affalterbach-Germany

info@riegger-diamant.de www.riegger-diamant.com

**RIEGGER**